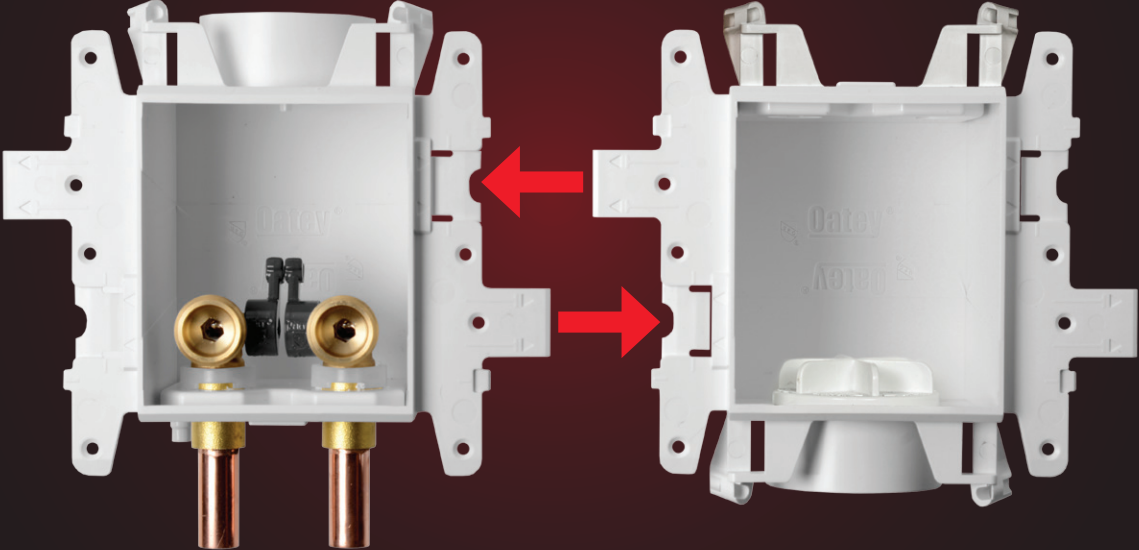




MODA™ MODULAR SUPPLY BOX SYSTEM

INFINITE SOLUTIONS

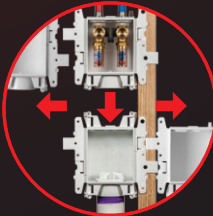
The most advanced Supply Box System from Oatey® - the choice of plumbing professionals.



UNIVERSAL SINGLE BOX PLATFORM



SNAP-LOCK DESIGN



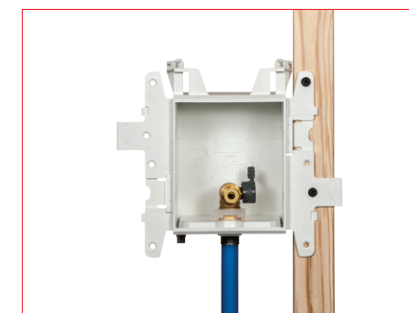
INSTALLATION VERSATILITY

INFINITE SOLUTIONS.

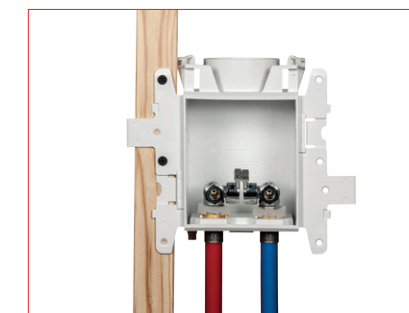
Completely modular and flexible, **MODA™** Supply Box System provides infinite solutions for every supply box need.



Washing Machine



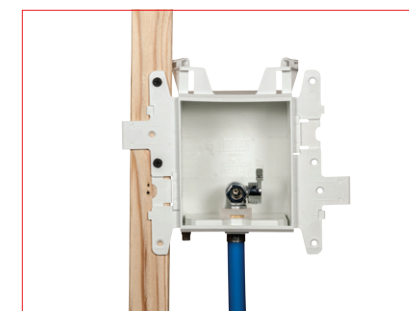
Ice Maker



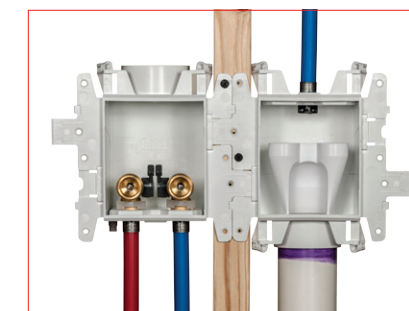
Lavatory



SureVent® Air Admittance Valve



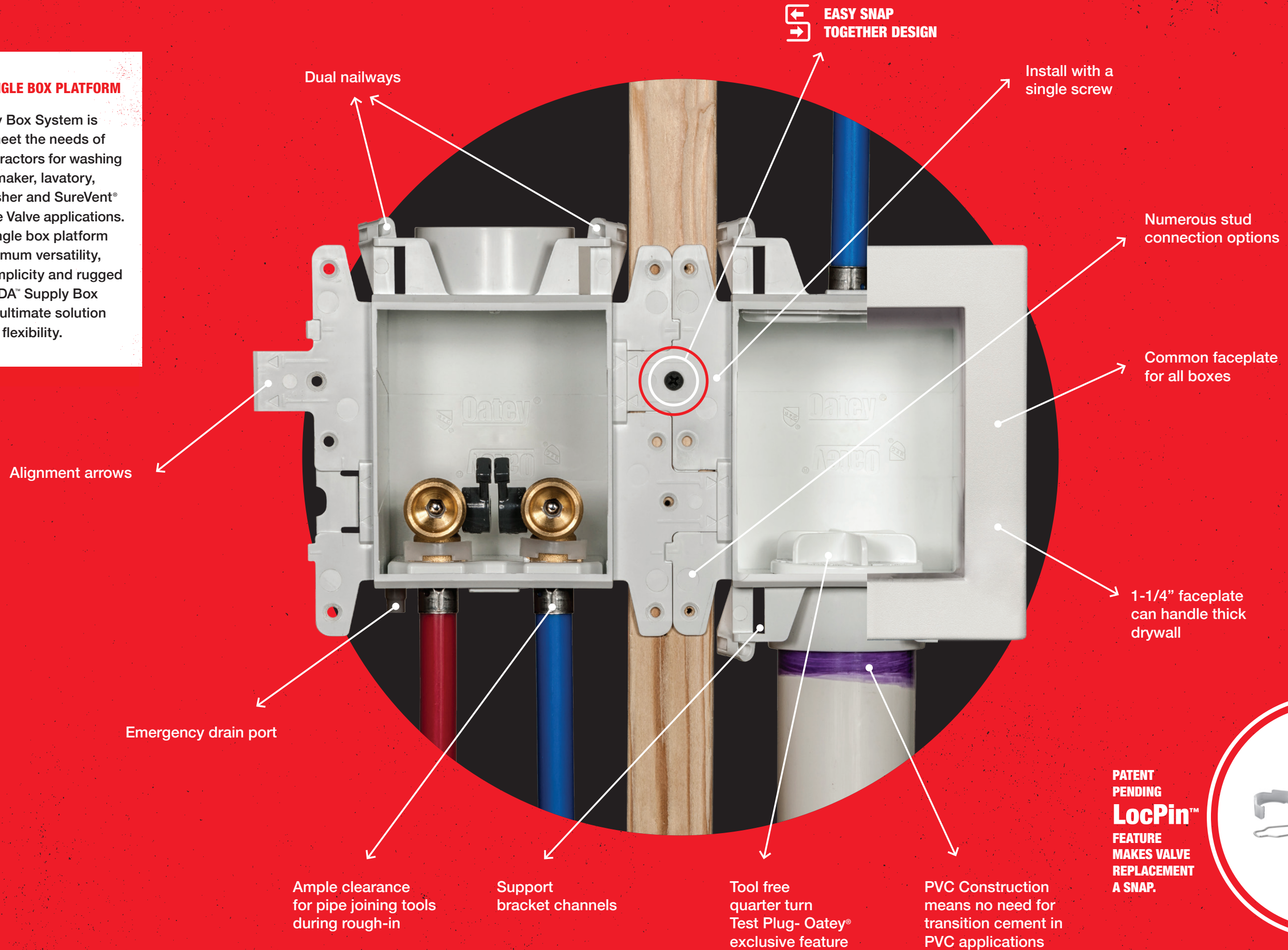
Toilet or Dishwasher



Washing Machine with Secondary Drain Funnel

UNIVERSAL SINGLE BOX PLATFORM

MODA™ Supply Box System is designed to meet the needs of plumbing contractors for washing machine, ice maker, lavatory, toilet, dishwasher and SureVent® Air Admittance Valve applications. A universal single box platform provides maximum versatility, installation simplicity and rugged reliability. MODA™ Supply Box System is the ultimate solution for speed and flexibility.



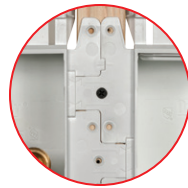
PATENT PENDING
LocPin™
FEATURE MAKES VALVE REPLACEMENT A SNAP.





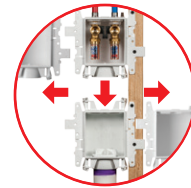
Universal Single Box Platform

Using a single box platform provides significant convenience to installers. One universal faceplate is compatible with all box types. All boxes can snap to one another, and common brackets can be used on any MODA™ supply box.



Stronger, Simpler Box Connections

Unique interlocking wing flanges accommodate on-stud, straddle-stud and three-box installations. Advanced snap-lock design allows assembly and disassembly with equal ease, for quicker installation and easy repositioning on the job.



Layout Versatility

Separate valve and drain boxes allow paired or split boxes between walls or stud bays to prevent supply/drain crossovers. Dual box design provides ideal options for stacked washer/dryers and space-limited laundry rooms.



Tool-Free Test Plug

Plumber-preferred, quarter-turn test plug with gasket provided with every drain box. This means no knock outs falling into drains and no tools required. Oatey® Exclusive feature.



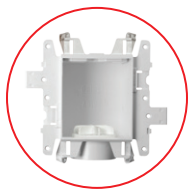
AAV Box Adapter

Quarter-turn adapter with gasket maintains air-tight seal and can be retrofitted on any drain box.



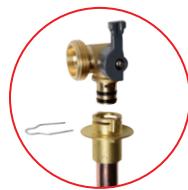
Emergency Drain Port

Valve boxes can be piped to the DWV system using flexible 3/8" ID tubing and hose clamps to guard against slow drips.



Tough PVC Construction

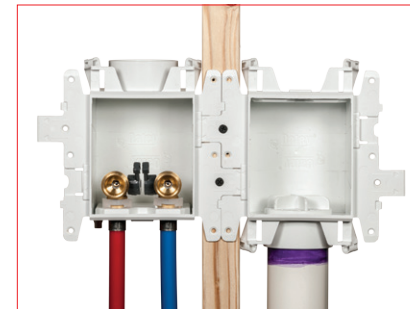
Stands up to the roughest job site abuse, and no transition cement needed when solvent welding PVC pipe.



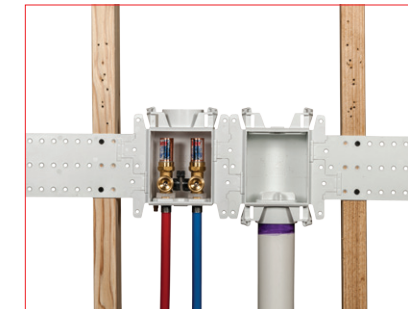
Easy Maintenance Valve with LocPin™ Feature (Patent Pending)

Two piece valve design makes valve replacement easy to repair, without damaging drywall. Valves rated to 150 PSI air and 250 PSI water.

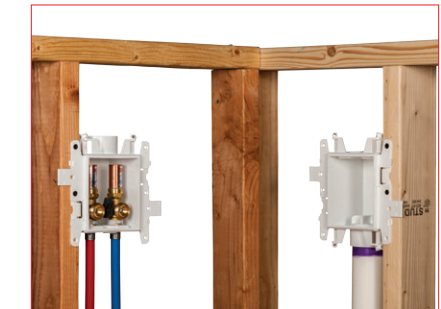
WASHING MACHINE INSTALLATIONS



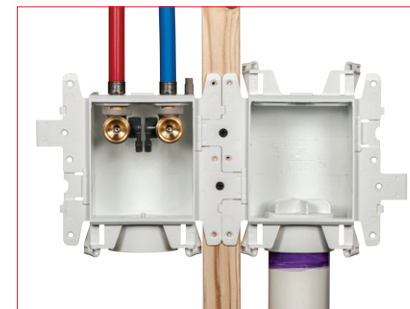
Straddle Stud



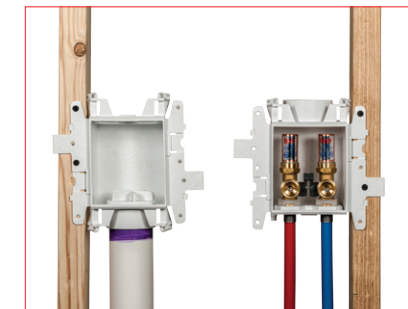
Center Stud



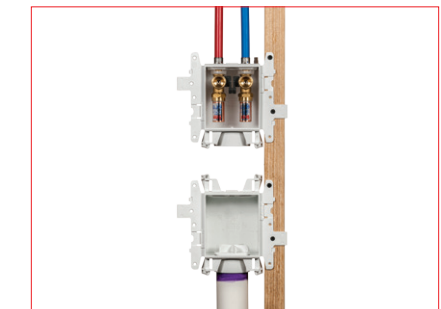
Separate Wall



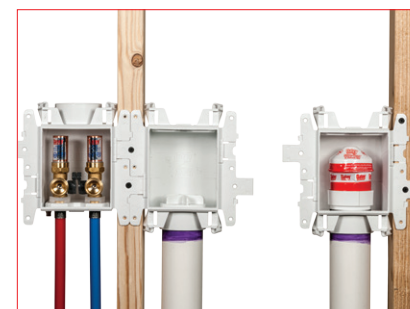
Inverted Valve



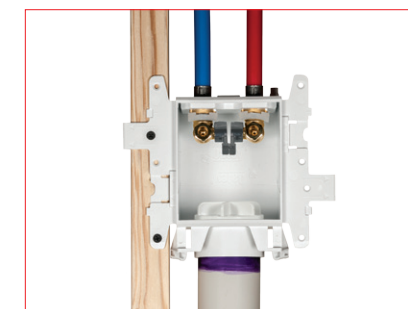
Separate Stud



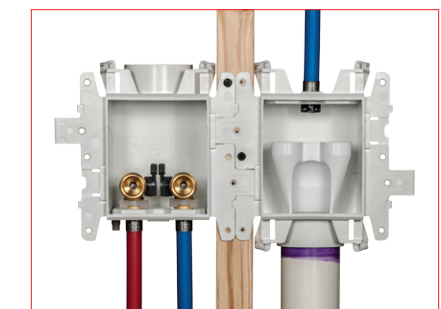
Stacked



Three Box System



Single Box



Auxiliary Drain

& MORE

What other systems missed, Oatey designed in.

Feature	Description	The Competition	MODA™
Solid, Simple Box Connection Method	Sturdy interlocking wing-flanges that accommodate on-stud, straddle-stud and three box installations. Snap locking system provides strength, while allowing for easy disassembly.	✗	✓
Tool-Free Test Plug	Quarter-turn test plug with gasket provided with drain boxes. Clearly identified and easy to remove. Plumber-preferred feature.	✗	✓
AAV Box Adapter	AAV easily installs into box with provided quarter-turn adapter. Adapter with gasket maintains air-tight seal in wall. Can be retrofitted on any drain box.	✗	✓
Emergency Drain Port	Valve boxes can be piped to the DWV system to protect against hose drips.	✗	✓
Two-Piece Valve Design	Two-piece valve design allows servicing of the valve without the need to cut out dry wall. Code compliant (where applicable).	✗	✓
Single Box Installation	Box design permits a single box washing machine installation (inverted valve), as all dual valve boxes have a top knockout built in.	✗	✓
Heavy Duty PVC Construction	PVC is a strong, rigid material that stands up to job site abuse. When solvent welding the box to PVC pipe, no transition cement is required.	✗	✓

VALVE CONNECTIONS



3/4" Male Thread Outlet (Washing Machine)



1/4" OD Compression Outlet (Ice Maker)



3/8" OD Compression Outlet (Lavatory, Toilet, Dishwasher)

VALVE TOPS



Hammer Arrestors



Non-Hammer



Clip & Clip Cover

All valves available with and without hammer arrestors.

All valves are cUPC listed and hammer arrestors are ASSE compliant.



Ice maker and utility valves are NSF 61 compliant.

VALVE TAILPIECES



Copper Sweat



F1807 PEX (Brass)



F1960 PEX (Brass)



CPVC



F2159 PEX (PPSU)



F1960 PEX (PPSU)

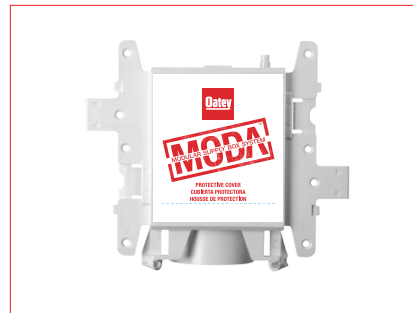


Push Connect

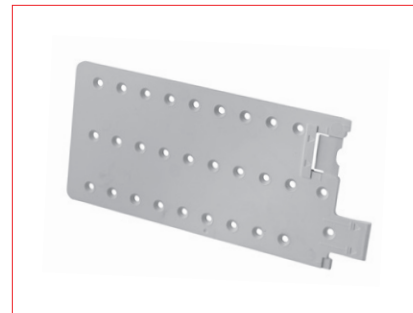
BOX COMPONENTS, FEATURES AND ACCESSORIES



Universal Faceplate
One box, one faceplate. It's just that simple. No more extra inventory or mis-matching. Included with every box.
Universal Faceplate: #37530



Protective Sticker Cover
Protects box from paint and drywall debris. Included with every box.
Sticker: #37529



Side Brackets
Broad, sturdy brackets just clip on, yet provide solid support to withstand rigorous drywall installations. Extras can be ordered as required. Included with every box.
Side Bracket: #37535



Faceplate Inserts
MODA offers three inserts that snap in to the standard faceplate - partial coverage, full coverage and louvered.
Solid Faceplate: #37532
Semi-Cover Faceplate: #37533
Louvered Faceplate: #37534



Secondary Drainage Funnel
Installs with a quarter turn, creating a 1" air gap and providing dual drain capabilities. Recommended for low volume (< 3 gpm) discharge appliances. When used with MODA® Auxiliary drain box and inlet fitting adapter, rated for up to 8.5 gpm discharge.
Secondary Drainage Funnel: #37536



SureVent® Adapter
Quarter turn adapter with gasket maintains air-tight seal, and can be retrofitted on any drain box. *Does not include SureVent® AAV.
Adapter: #37537

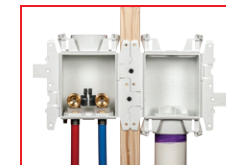


Center Support
Provides added rigidity in center and metal stud installations. Fits into metal stud cavity. Included with all **double** boxes.
Center support: #37539



Tool-Free Test Plug
Oatey's popular tool-free, quarter-turn mechanical test plug cap with gasket can't fall down into the drain line. Extras can be ordered as required. Included with every drain box.
Test Plug: #38576

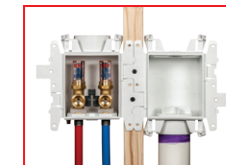
WASHING MACHINE OUTLET BOXES



TWO VALVE BOX + STANDARD DRAIN BOX

No Hammer

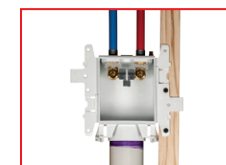
PART NO.	VALVE APPLICATION	VALVE TAILPIECE	PACK TYPE	QTY	UPC
37601	Washing Machine	Copper (Male)	Standard	12	038753376011
37617	Washing Machine	Copper (Male)	Contractor	12	038753376172
37603	Washing Machine	F1807 PEX (Brass)	Standard	12	038753376035
37619	Washing Machine	F1807 PEX (Brass)	Contractor	12	038753376196
37604	Washing Machine	F2159 PEX (PPSU)	Standard	12	038753376042
37620	Washing Machine	F2159 PEX (PPSU)	Contractor	12	038753376202
37605	Washing Machine	F1960 PEX (Brass)	Standard	12	038753376059
37621	Washing Machine	F1960 PEX (Brass)	Contractor	12	038753376219
37606	Washing Machine	F1960 PEX (PPSU)	Standard	12	038753376066
37622	Washing Machine	F1960 PEX (PPSU)	Contractor	12	038753376226
37602	Washing Machine	CPVC (Male)	Standard	12	038753376028
37618	Washing Machine	CPVC (Male)	Contractor	12	038753376189
37608	Washing Machine	Push Connect	Standard	12	038753376080



TWO VALVE BOX + STANDARD DRAIN BOX

Hammer

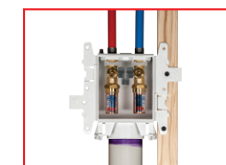
PART NO.	VALVE APPLICATION	VALVE TAILPIECE	PACK TYPE	QTY	UPC
37609	Washing Machine	Copper (Male)	Standard	12	038753376097
37625	Washing Machine	Copper (Male)	Contractor	12	038753376257
37611	Washing Machine	F1807 PEX (Brass)	Standard	12	038753376110
37627	Washing Machine	F1807 PEX (Brass)	Contractor	12	038753376271
37612	Washing Machine	F2159 PEX (PPSU)	Standard	12	038753376127
37628	Washing Machine	F2159 PEX (PPSU)	Contractor	12	038753376288
37613	Washing Machine	F1960 PEX (Brass)	Standard	12	038753376134
37629	Washing Machine	F1960 PEX (Brass)	Contractor	12	038753376295
37614	Washing Machine	F1960 PEX (PPSU)	Standard	12	038753376141
37630	Washing Machine	F1960 PEX (PPSU)	Contractor	12	038753376301
37610	Washing Machine	CPVC (Male)	Standard	12	038753376103
37626	Washing Machine	CPVC (Male)	Contractor	12	038753376264
37616	Washing Machine	Push Connect	Standard	12	038753376165



SINGLE BOX (TWO VALVE + DRAIN)

No Hammer

PART NO.	VALVE APPLICATION	VALVE TAILPIECE	PACK TYPE	QTY	UPC
37540	Washing Machine	Copper (Male)	Standard	12	038753375403
37541	Washing Machine	F1807 PEX (Brass)	Standard	12	038753375410
37542	Washing Machine	F2159 PEX (PPSU)	Standard	12	038753375427
37543	Washing Machine	F1960 PEX (Brass)	Standard	12	038753375434
37544	Washing Machine	F1960 PEX (PPSU)	Standard	12	038753375441
37545	Washing Machine	CPVC (Male)	Standard	12	038753375458
37546	Washing Machine	Push Connect	Standard	12	038753375465



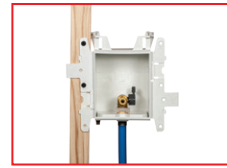
SINGLE BOX (TWO VALVE + DRAIN)

Hammer

PART NO.	VALVE APPLICATION	VALVE TAILPIECE	PACK TYPE	QTY	UPC
37550	Washing Machine	Copper (Male)	Standard	12	038753375502
37551	Washing Machine	F1807 PEX (Brass)	Standard	12	038753375519
37552	Washing Machine	F2159 PEX (PPSU)	Standard	12	038753375526
37553	Washing Machine	F1960 PEX (Brass)	Standard	12	038753375533
37554	Washing Machine	F1960 PEX (PPSU)	Standard	12	038753375540
37555	Washing Machine	CPVC (Male)	Standard	12	038753375557
37556	Washing Machine	Push Connect	Standard	12	038753375564

Standard packs are shipped with faceplates on boxes. Contractor packs are shipped with faceplates packaged separately.

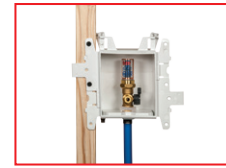
ICE MAKER SUPPLY BOXES



ONE VALVE BOX

No Hammer

PART NO.	VALVE APPLICATION	VALVE TAILPIECE	PACK TYPE	QTY	UPC
37679	Ice Maker	Copper (Male)	Standard	12	038753376790
37695	Ice Maker	Copper (Male)	Contractor	12	038753376950
37681	Ice Maker	F1807 PEX (Brass)	Standard	12	038753376813
37697	Ice Maker	F1807 PEX (Brass)	Contractor	12	038753376974
37682	Ice Maker	F2159 PEX (PPSU)	Standard	12	038753376820
37698	Ice Maker	F2159 PEX (PPSU)	Contractor	12	038753376981
37683	Ice Maker	F1960 PEX (Brass)	Standard	12	038753376837
37699	Ice Maker	F1960 PEX (Brass)	Contractor	12	038753376998
37684	Ice Maker	F1960 PEX (PPSU)	Standard	12	038753376844
37700	Ice Maker	F1960 PEX (PPSU)	Contractor	12	038753377001
37680	Ice Maker	CPVC (Male)	Standard	12	038753376806
37696	Ice Maker	CPVC (Male)	Contractor	12	038753376967
37686	Ice Maker	Push Connect	Standard	12	038753376868

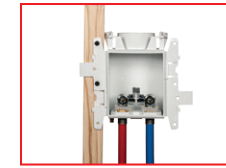


ONE VALVE BOX

Hammer

PART NO.	VALVE APPLICATION	VALVE TAILPIECE	PACK TYPE	QTY	UPC
37687	Ice Maker	Copper (Male)	Standard	12	038753376875
37703	Ice Maker	Copper (Male)	Contractor	12	038753377032
37689	Ice Maker	F1807 PEX (Brass)	Standard	12	038753376899
37705	Ice Maker	F1807 PEX (Brass)	Contractor	12	038753377056
37690	Ice Maker	F2159 PEX (PPSU)	Standard	12	038753376905
37706	Ice Maker	F2159 PEX (PPSU)	Contractor	12	038753377063
37691	Ice Maker	F1960 PEX (Brass)	Standard	12	038753376912
37707	Ice Maker	F1960 PEX (Brass)	Contractor	12	038753377070
37692	Ice Maker	F1960 PEX (PPSU)	Standard	12	038753376929
37708	Ice Maker	F1960 PEX (PPSU)	Contractor	12	038753377087
37688	Ice Maker	CPVC (Male)	Standard	12	038753376882
37704	Ice Maker	CPVC (Male)	Contractor	12	038753377049
37694	Ice Maker	Push Connect	Standard	12	038753376943

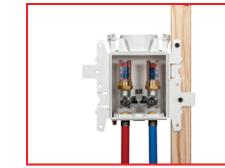
LAVATORY SUPPLY BOXES



TWO VALVE BOX

No Hammer

PART NO.	VALVE APPLICATION	VALVE TAILPIECE	PACK TYPE	QTY	UPC
37741	Lavatory	Copper (Male)	Standard	12	038753377414
37757	Lavatory	Copper (Male)	Contractor	12	038753377575
37743	Lavatory	F1807 PEX (Brass)	Standard	12	038753377438
37759	Lavatory	F1807 PEX (Brass)	Contractor	12	038753377599
37744	Lavatory	F2159 PEX (PPSU)	Standard	12	038753377445
37760	Lavatory	F2159 PEX (PPSU)	Contractor	12	038753377605
37745	Lavatory	F1960 PEX (Brass)	Standard	12	038753377452
37761	Lavatory	F1960 PEX (Brass)	Contractor	12	038753377612
37746	Lavatory	F1960 PEX (PPSU)	Standard	12	038753377469
37762	Lavatory	F1960 PEX (PPSU)	Contractor	12	038753377629
37742	Lavatory	CPVC (Male)	Standard	12	038753377421
37758	Lavatory	CPVC (Male)	Contractor	12	038753377582
37748	Lavatory	Push Connect	Standard	12	038753377483

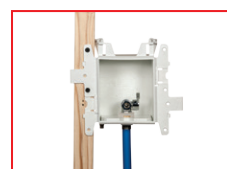


TWO VALVE BOX

Hammer

PART NO.	VALVE APPLICATION	VALVE TAILPIECE	PACK TYPE	QTY	UPC
37749	Lavatory	Copper (Male)	Standard	12	038753377490
37765	Lavatory	Copper (Male)	Contractor	12	038753377650
37751	Lavatory	F1807 PEX (Brass)	Standard	12	038753377513
37767	Lavatory	F1807 PEX (Brass)	Contractor	12	038753377674
37752	Lavatory	F2159 PEX (PPSU)	Standard	12	038753377520
37768	Lavatory	F2159 PEX (PPSU)	Contractor	12	038753377681
37753	Lavatory	F1960 PEX (Brass)	Standard	12	038753377537
37769	Lavatory	F1960 PEX (Brass)	Contractor	12	038753377698
37754	Lavatory	F1960 PEX (PPSU)	Standard	12	038753377544
37770	Lavatory	F1960 PEX (PPSU)	Contractor	12	038753377704
37750	Lavatory	CPVC (Male)	Standard	12	038753377506
37766	Lavatory	CPVC (Male)	Contractor	12	038753377667
37756	Lavatory	Push Connect	Standard	12	038753377568

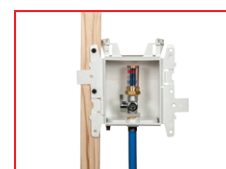
TOILET OR DISHWASHER SUPPLY BOXES



ONE VALVE BOX

No Hammer

PART NO.	VALVE APPLICATION	VALVE TAILPIECE	PACK TYPE	QTY	UPC
37897	Toilet / Dishwasher	Copper (Male)	Standard	12	038753378978
37899	Toilet / Dishwasher	F1807 PEX (Brass)	Standard	12	038753378992
37900	Toilet / Dishwasher	F2159 PEX (PPSU)	Standard	12	038753379005
37901	Toilet / Dishwasher	F1960 PEX (Brass)	Standard	12	038753379012
37902	Toilet / Dishwasher	F1960 PEX (PPSU)	Standard	12	038753379029
37898	Toilet / Dishwasher	CPVC (Male)	Standard	12	038753378985
37904	Toilet / Dishwasher	Push Connect	Standard	12	038753379043

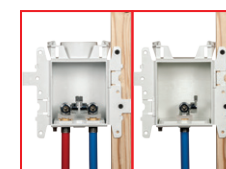


ONE VALVE BOX

Hammer

PART NO.	VALVE APPLICATION	VALVE TAILPIECE	PACK TYPE	QTY	UPC
37905	Toilet / Dishwasher	Copper (Male)	Standard	12	038753379050
37907	Toilet / Dishwasher	F1807 PEX (Brass)	Standard	12	038753379074
37908	Toilet / Dishwasher	F2159 PEX (PPSU)	Standard	12	038753379081
37909	Toilet / Dishwasher	F1960 PEX (Brass)	Standard	12	038753379098
37910	Toilet / Dishwasher	F1960 PEX (PPSU)	Standard	12	038753379104
37906	Toilet / Dishwasher	CPVC (Male)	Standard	12	038753379067
37912	Toilet / Dishwasher	Push Connect	Standard	12	038753379128

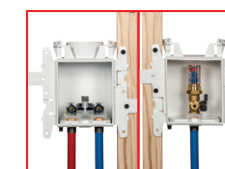
KITCHEN SUPPLY BOXES



TWO VALVE BOX + ONE VALVE BOX

Lavatory Non-Hammer + Dishwasher Non-Hammer

PART NO.	VALVE APPLICATION	VALVE TAILPIECE	PACK TYPE	QTY	UPC
37819	Kitchen	Copper (Male)	Standard	12	038753378190
37821	Kitchen	F1807 PEX (Brass)	Standard	12	038753378213
37822	Kitchen	F2159 PEX (PPSU)	Standard	12	038753378220
37823	Kitchen	F1960 PEX (Brass)	Standard	12	038753378237
37824	Kitchen	F1960 PEX (PPSU)	Standard	12	038753378244
37820	Kitchen	CPVC (Male)	Standard	12	038753378206
37826	Kitchen	Push Connect	Standard	12	038753378268

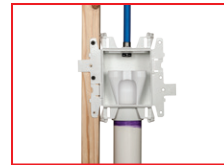


TWO VALVE BOX + ONE VALVE BOX

Lavatory Non-Hammer + Dishwasher Hammer

PART NO.	VALVE APPLICATION	VALVE TAILPIECE	PACK TYPE	QTY	UPC
37827	Kitchen	Copper (Male)	Standard	12	038753378275
37829	Kitchen	F1807 PEX (Brass)	Standard	12	038753378299
37830	Kitchen	F2159 PEX (PPSU)	Standard	12	038753378305
37831	Kitchen	F1960 PEX (Brass)	Standard	12	038753378312
37832	Kitchen	F1960 PEX (PPSU)	Standard	12	038753378329
37828	Kitchen	CPVC (Male)	Standard	12	038753378282
37834	Kitchen	Push Connect	Standard	12	038753378343

SECONDARY DRAIN KITS + ACCESSORIES

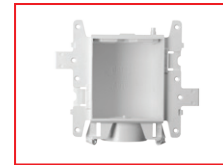


SECONDARY DRAIN KITS

Includes Aux Drain Box + Funnel + 1 Inlet Connection + Drain Test Plug

PART NO.	SIZE	VALVE TAILPIECE	PACK TYPE	QTY	UPC
37557	1/2"	Copper (Male)	Standard	12	038753375571
37985	1/2"	F1807 PEX (Brass)	Standard	12	038753379852
37986	1/2"	F1960 PEX (Brass)	Standard	12	038753379869
37558	1/2"	CPVC (Male)	Standard	12	038753375588
37559	3/4"	Copper (Male)	Standard	12	038753375595
37987	3/4"	F1807 PEX (Brass)	Standard	12	038753379876
37988	3/4"	F1960 PEX (Brass)	Standard	12	038753379883

*Designed to be paired with single washing machine box



PLAIN BOXES

Plain Boxes

PART NO.	DESCRIPTION	PACK TYPE	QTY	UPC
37971	1 Valve Port	Standard	12	038753379715
37972	2 Valve Port	Standard	12	038753379722
37970	Standard Drain	Standard	12	038753379708
37973	Drain + Aux Port	Standard	12	038753379739
37974	Drain + 2 Aux Port	Standard	12	038753379746

AIR ADMITTANCE VALVE BOX



SUREVENT® AIR ADMITTANCE VALVE BOX

SureVent® Boxes

PART NO.	VALVE APPLICATION	PACK TYPE	QTY	UPC
37981	SureVent® Air Admittance Valve	Standard	12	038753379814

MODA™ COMPONENTS + VALVES

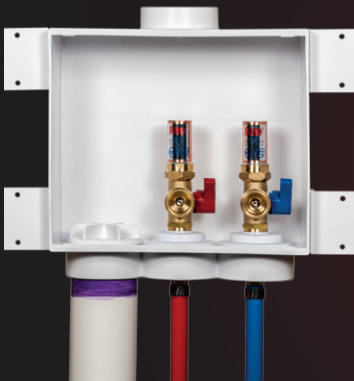
MODA™ Accessories				
PART NO.	VALVE APPLICATION	QTY	UPC	
37531	MODA Faceplate	12	038753375311	
37532	MODA Faceplate Insert - Solid	12	038753375328	
37533	MODA Faceplate Insert - Semi-Cover	12	038753375335	
37534	MODA Faceplate Insert - Louvered	12	038753375342	
37535	MODA Plastic Bracket	12	038753375359	
38576	DWV Quarter Turn Test Plug	12	038753385761	
37536	MODA Condensate Funnel	12	038753375366	
37537	MODA SureVent Adapter	12	038753375373	
37538	MODA Valve Clip Cover	12	038753375380	
37539	MODA Center Support	12	038753375397	
37529	MODA Debris Cover Sticker	12	038753375298	
37530	Telescoping Steel Bracket	12	038753375304	

MODA™ Valves				
PART NO.	DESCRIPTION	QTY	UPC	
37500	Valve Top + Clip, WMOB, NoHam, Grey Handle, Cold	1	038753375007	
37501	Valve Top + Clip, WMOB, NoHam, Grey Handle, Hot	1	038753375014	
37502	Valve Top + Clip, WMOB, Ham, Grey Handle, Cold	1	038753375021	
37503	Valve Top + Clip, WMOB, Ham, Grey Handle, Hot	1	038753375038	
37504	Valve Top + Clip, Utility, NoHam, Grey Handle, Cold	1	038753375045	
37505	Valve Top + Clip, Utility, NoHam, Grey Handle, Hot	1	038753375052	
37506	Valve Top + Clip, Utility, Ham, Grey Handle, Cold	1	038753375069	
37507	Valve Top + Clip, Utility Ham, Grey Handle, Hot	1	038753375076	
37508	Valve Top + Clip, IMOB, NoHam	1	038753375083	
37509	Valve Top + Clip, IMOB, Ham	1	038753375090	
37510	1/2" Copper Tailpiece Adapter Male	1	038753375106	
37511	1/2" Brass F1807 Tailpiece Adapter	1	038753375113	
37512	1/2" Brass F1960 Tailpiece Adapter	1	038753375120	
37513	1/2" Plastic F2159 Tailpiece Adapter	1	038753375137	
37514	1/2" Plastic F1960 Tailpiece Adapter	1	038753375144	
37515	1/2" CPVC Tailpiece Adapter Male	1	038753375151	
37516	3/4" Copper Tailpiece Adapter Male	1	038753375168	
37517	3/4" Brass F1807 Tailpiece Adapter	1	038753375175	
37518	3/4" Brass F1960 Tailpiece Adapter	1	038753375182	
38294	Hot/Cold Valve Temperature Indicator Clips (12 Red, 12 Blue)	24	038753392943	

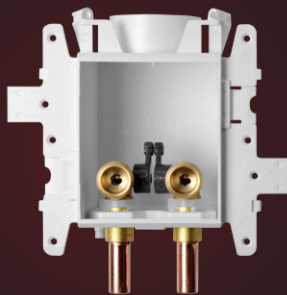
The Oatey logo consists of the word "Oatey" in a bold, white, sans-serif font, with a horizontal line underneath the letters "a" and "e". A registered trademark symbol (®) is located to the right of the line. The logo is centered within a solid red square.

Oatey®

SUPPLY BOX SUPERIORITY



QUADTRO™



MODA™



FIRE-RATED

Contact your local sales representative
to place your order today.

the choice of plumbing professionals