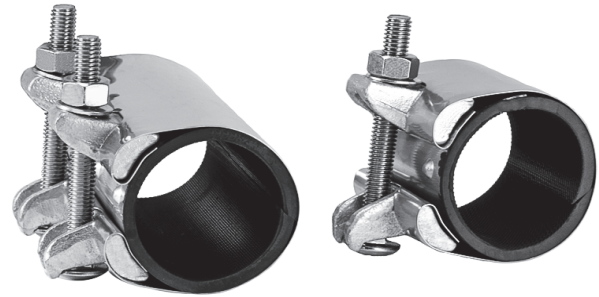


JCM 111 Full-Repair Clamps

JCM 111 Full-Repair clamps are a fast economical means of permanently repairing steel pipe with extensive corrosion, splits, punctures or pin holes. These clamps have a heavy, full circumferential Buna-N gasket with a hardened recessed armor. This provides extra sealing capability for heavily damaged pipe and pipe with reduced diameter due to corrosion. Available in all stainless steel.



JCM 111 FULL- REPAIR CLAMPS

Steel Pipe Sizes - IPS

Copper Tube Sizes - CTS

NOMINAL PIPE SIZE (IN.)	PIPE O. D. (IN.)	TYPE OF PIPE	WIDTH (IN.)	CLAMP NUMBER E-GALV. BOLT	STAINLESS BOLT Add (SS)	ALL STAINLESS Add (AS)	WT. EA. (LBS.)	CTN. QTY.
1/2"	0.84	IPS	3	111-0084-3	SS	AS	.7	20
			6	111-0084-6	SS	AS	1.4	10
3/4"	1.05	IPS	3	111-0105-3	SS	AS	.7	16
			6	111-0105-6	SS	AS	1.4	8
	0.88	CTS	3	111-0088-3	SS	AS	.7	16
			6	111-0088-6	SS	AS	1.4	8
1"	1.32	IPS	3	111-0132-3	SS	AS	.8	16
			6	111-0132-6	SS	AS	1.5	8
	1.13	CTS	3	111-0113-3	SS	AS	.8	16
			6	111-0113-6	SS	AS	1.5	8
1-1/4"	1.66	IPS	3	111-0166-3	SS	AS	.9	12
			6	111-0166-6	SS	AS	1.8	6
1-1/2"	1.63	CTS	3	111-0166-3	SS	AS	.9	12
			6	111-0166-6	SS	AS	1.8	6
	1.90	IPS	3	111-0190-3	SS	AS	1.3	12
			6	111-0190-6	SS	AS	2.6	6
2"	2.38	IPS	3	111-0238-3	SS	AS	1.3	8
			6	111-0238-6	SS	AS	2.7	4

HOW TO ORDER

- Determine clamp size, material options and width required.
- Order by clamp number.

For **Stainless Steel Bolt(s)** add **(SS)** to clamp number.

For **ALL Stainless Steel Clamp** add **(AS)** to clamp number.

Example: All Stainless Steel Clamp for 2" IPS PVC with 2.38 O.D. 3" with, order 111-0238-3AS

Material Specifications

JCM 110 PATCH CLAMPS and JCM 111 FULL-REPAIR CLAMPS

JCM 110 PATCH CLAMP

Lug: Ductile Iron ASTM A-536. Optional CF8 Stainless Steel, equal to 304.

Gasket: Rubber gasket suitable for gas.

Band: 18-8 Type 304 Stainless Steel

Hardware: Electro-galvanized Steel.

Optional Stainless Steel available.

JCM 111 FULL-REPAIR CLAMP

Lug: Ductile Iron ASTM A-536. Optional CF8 Stainless Steel, equal to 304.

Gasket: Buna-N

Band: 18-8 Type 304 Stainless Steel

Hardware: Electro-galvanized Steel.

Optional Stainless Steel available.

