

For Residential and Commercial Applications

Job Name		Engineer / Architect	
Job Location		Wholesaler	
Submittal Date		Contractor	

462 Series Female Flare x Compression Adaptor

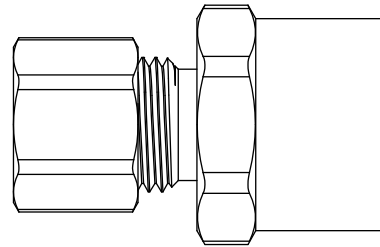
Use: Used to convert the flare outlet of a water stop to a compression connection. May also be used with instrumentation, hydraulic, and pneumatic systems. Designed for use with aluminum, copper, and plastic tubing. Not intended for use with steel tubing.

NOTE: Female flare connection does not require a washer to seal. However, washers are available to reduce seal torque.

Operating Specifications:

- Temperature:** -65° to 250°F at max operating pressures
- Working Pressure:** See chart below
- Vibration:** Fair vibration resistance

WORKING PRESSURE		
PSI	Tube OD (Inches)	Tube Wall (Inches)
400	1/8	0.030
400	3/16	0.030
300	1/4	0.030
300	5/16	0.032
200	3/8	0.032
200	1/2	0.032
150	5/8	0.035
100	3/4	0.035
75	7/8	0.035



Standard

MATERIAL SPECIFICATIONS	
Fitting Body	Brass
Compression Sleeve	Brass
Compression Nut	Brass

No Lead

MATERIAL SPECIFICATIONS	
Fitting Body	No-Lead brass
Compression Sleeve	Brass
Compression Nut	Brass

Standard Part Listing:

- 462-6-4 3/8" female flare, fine thread x 1/4" OD tube
- 462-6-6 3/8" female flare, fine thread x 3/8" OD tube
- 462-8-6 1/2" female flare, fine thread x 3/8" OD tube

This specification and all information contained herein is the confidential and exclusive property of BrassCraft Manufacturing, and shall not be disclosed to others without the written consent of BrassCraft Mfg. This specification must be returned to BrassCraft Mfg. if requested.

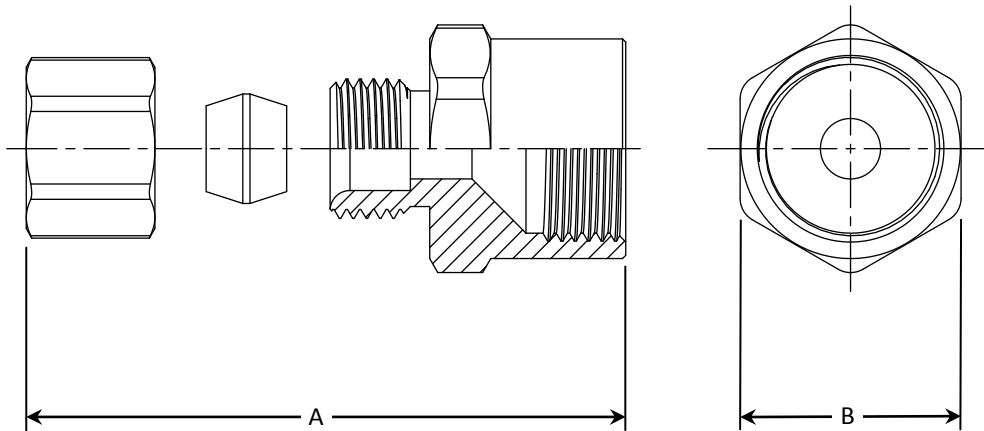


462 Series Female Flare x Compression Adaptor

No-Lead Part Listing:

- 462-6-4X 3/8" female flare, fine thread x 1/4" OD tube
- 462-6-6X 3/8" female flare, fine thread x 3/8" OD tube
- 462-8-6X 1/2" female flare, fine thread x 3/8" OD tube

PART DIMENSIONS (Inches)		
Model	DIM. A	HEX. B
462-6-4	1.21	11/16
462-6-6	1.08	5/8
462-8-6	1.22	13/16



Listings & Certifications:

- No-Lead product CSA listed to Low Lead Content Certification Program – Plumbing Products Class 6853-01



This specification and all information contained herein is the confidential and exclusive property of BrassCraft Manufacturing, and shall not be disclosed to others without the written consent of BrassCraft Mfg. This specification must be returned to BrassCraft Mfg. if requested.

BrassCraft[®]